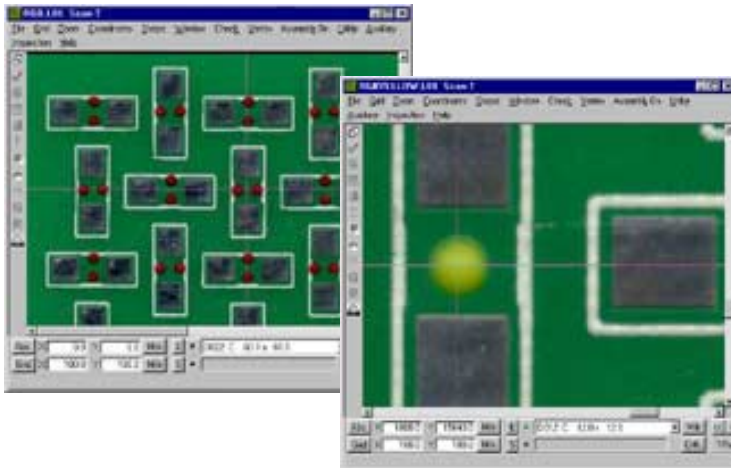


# ScanINSPECT ADI™

## Automatic Dispense Inspection



### WHAT IS ScanINSPECT?

ScanINSPECT provides a simple and user-friendly alternative to inaccurate and time-consuming manual inspection methods or expensive, high-end AOI systems.

ScanINSPECT uses a simple Windows user interface integrated with an automatic table and image-processing unit. This combination allows 100% inspection of adhesive placement on PCBs after dispensing.

### HOW DOES ScanINSPECT ADI WORK?

ScanINSPECT ADI provides 100% verification of absence / presence of glue dot dispensing before entering the placement environment. Provides offline inspection for SPC sampling of low volume production.

Each PCB or substrate is placed from the dispensing or printing machine into ScanINSPECT for 100% inspection. The PCB is then accepted and returned to the surface mount machines or rejected. No more surprises!

### QUICK & SIMPLE PROGRAMMING

ScanINSPECT is quickly programmed from a golden board in a few minutes.

### INCREASE YIELD & IMPROVE OVERALL EQUIPMENT EFFICIENCY

ScanINSPECT's powerful inspection process increases product yield by ensuring accurate dispensing placement. Thus, assisting with secure component placement and eliminating potential damage to nozzles and other delicate placement machine elements. Missing adhesive can result in very expensive equipment repairs, lost production time and extensive rework.

Missing glue dots are now automatically detected. Problems are detected and eliminated before boards are placed into production!

### SIMPLICITY

ScanINSPECT set up is fast and easy. In production, each board is placed on the automatic table, is shuttled in, automatically aligned and checked for accuracy with a PASS or FAIL inspection in seconds.

### WHY USE ScanINSPECT?

- **Mandatory:** 100% automatic inspection of adhesive dots after dispensing or printing.
- **Security:** Confirm glue dot absence / presence.
- **Necessity:** Detect errors before damaging down line machines.
- **Flexibility:** Inspect a wide variety of board sizes and shapes.



### DESKTOP MODULE

#### System Specifications\*

- Maximum Board Size: 18" X 24" (457mm X 610mm)
  - Maximum Inspection Area: 16.5" X 22" (419mm X 559mm)
  - Minimum Board Size: 1" X 1" (25.4mm X 25.4mm)
  - Resolution: 400/1000/2000/3200\*/4000\* dpi
- \*Reduced Scanning area for 3200 & 4000 dpi.

#### Footprint of Inspection Unit

- Depth: 31.5" (800mm), table extended 49.5" (1,257mm)
- Width: 27.25" (692mm)
- Height: 19" (482mm)
- Weight: 150lbs. (55.95kg)

#### COMPUTER\*

- Pentium III (1GHz) Personal Computer
- 60 GB HD, 512 MB RAM
- CD-ROM (CD-RW for archive purposes)
- Monitor (17" or larger)
- Printer
- Win 98SE/Me/2000/XP – Requires:  
2 available USB ports

\*Recommended customer supplied minimum PC requirements.

(All specifications and designs subject to change without notice.)



PO Box 598, 19181 Hwy 8  
Morrison CO 80465-0598 USA  
T: 303.697.8888 F: 303.697.8580  
E: [info@scancad.com](mailto:info@scancad.com) [www.scancad.com](http://www.scancad.com)