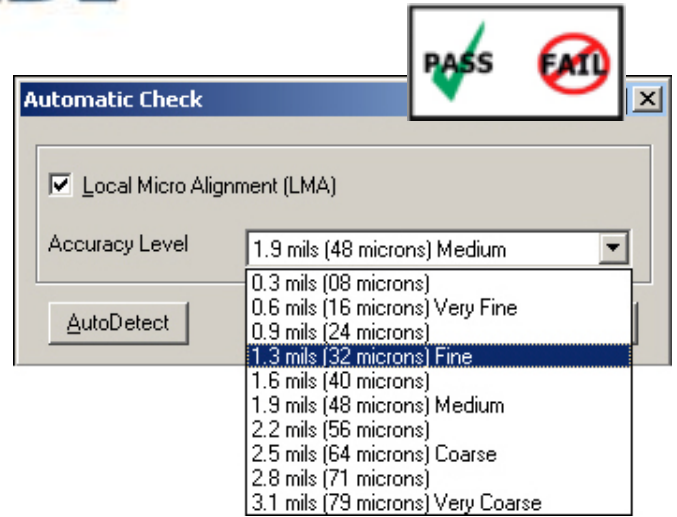
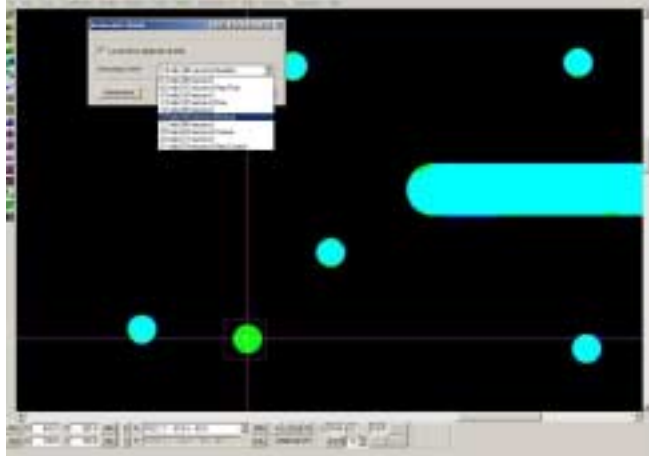


# ScanINSPECT LDI™

Laser Drill Inspection



## WHAT IS ScanINSPECT LDI?

**ScanINSPECT LDI** (Laser Drill Inspection) for Holes and Slots is a fully integrated, stand-alone inspection workstation for laser-drilled holes and slots in green tape and fired ceramic substrates, laminates and other machined materials.

**ScanINSPECT LDI** uses a PC Windows based software package integrated with a color, high-resolution, calibrated, A3 or A4 size flatbed scanner. This combination allows for 100% automatic inspection for absence, presence, position, full or partial blockage, undersized and oversized holes and slots.

## VERIFICATION

Use the **ScanINSPECT LDI** check-functions to verify size and position accuracy. The new Local Micro Alignment (LMA) module allows for checking apertures as small as 0.002 inch in diameter (0.050 mm) with size error of  $\pm 0.0003$ " (0.008mm) at 3200 dpi. Comparison is made against Gerber data or Golden Board.

System functions verify machined materials for production errors, accuracy, size, identify blockage, and step the operator automatically through all discrepancies of the verification results.

## FEATURES

- Color or Black & White Inspection
- Report Generation: Creates Documentation for Rework
- Fast, Easy to Use, Easy to Program
- Resolution: Down to 0.00025" mm (4000 DPI)
- Verification: Down to 0.002" (50mm) Objects
- Measurement and Inspection Tool
- First Article or Production System
- Flexible: Easily Upgradeable to All Other ScanCAD Software Modules
- LOW COST!

## TECHNICAL SPECIFICATIONS

### SCANNER

- High-Resolution Color Flatbed Scanner, Size A3 or A4: (400, 1000, 2000, 3200\*, 4000\* DPI)
  - Calibrated Accuracy:  $\pm 0.0015$ " ( $\pm 0.0381$ mm)
  - Scanning Bed Area: 11.7" x 16.5" (297mm x 419mm) - A3
  - Scanning Bed Area: 8.5" x 11.5" (216mm x 292mm) - A4
  - Maximum Work Area: 32.0" x 32.0" (813mm x 813mm)
- \*Reduced scanning area for 3200 & 4000 dpi

### COMPUTER\*

- Pentium III (1GHz) Personal Computer
- 60 GB HD, 512 MB RAM
- CD-ROM (CD-RW for archive purposes)
- Monitor (17" or larger)
- Printer
- Windows 2000XP – Requires:  
2 available USB ports

\*Recommended customer supplied minimum PC requirements.

### ADDITIONAL SYSTEM COMPONENTS

- Precision Glass Calibration Grid
- Scanner Interface Cards/Cables
- Software Protection Key
- Transmissive Lighting Package
- Custom Desk
- Scanning Accessory Package



The following are trademarks of the indicated companies: Gerber, The Gerber Scientific Instrument Company; Windows 2000/XP, Microsoft® ScanINSPECT™ LDI is a trademark of ScanCAD International, Inc.

(All specifications and designs subject to change without notice.)



PO Box 598, 19181 Hwy 8  
Morrison CO 80465-0598 USA  
T: 303.697.8888 F: 303.697.8580  
E: [info@scancad.com](mailto:info@scancad.com) [www.scancad.com](http://www.scancad.com)